



**CHIEN SHENG**

千聖機械

**LONG SHINE**

昶旭電子

**BBQ MOTOR  
ROTISSERIE KIT &  
ACCESSORY**



# COMPANY PROFILE

Chien Sheng Machine Industrial Co., LTD. was established in 1979. After 15 years of effort, we established LONG SHINE ELECTRONIC (SHEN ZHEN) LIMITED in Shenzhen, China in 1994. We are a leading ODM/OEM manufacturer and supplier for delivering world-class quality BBQ rotisseries motors, grill accessories at an affordable price with the promises of excellent customer service.

We specialize in manufacturing motors, and while we offer a diverse range of motors for global applications, we continue to develop stylish products that are in line with the new generation of ideas and upgrade our appliances to be water-resistant for outdoor use. All of our BBQ motors are UL, CUL, CSA, CE, UKCA certified; some have been honored by RoHS. We also provide you with certain spit rods, forks, spit grill rotisserie baskets and other accessories that are assembled to our motors, not to mention they are FDA and Europe food contact certified.

We maintain stringent quality standards in our manufacturing processes and make sure the products go through rigorous testing to ensure that they not only meet but exceed the industry standards of quality, durability, and functionality.

We have devoted ourselves to build long-term partnerships with brand vendors distributors and retailers around the world based on a foundation of integrity.

Become our business partner and let's bring the best products to satisfy everyone we serve and give them incredible experiences!







### UKCA

The UKCA marking is a new UK product marking that is used for goods being placed on the market in Great Britain ( England, Wales and Scotland ). It covers most goods which previously required the CE marking, known as 'new approach' goods.



### CUL

This mark means the components only used in the Canadian market met UL's safety requirements.



### CE

CE marking is a mandatory conformity marking for certain products sold within the European Economic Area ( EEA ) since 1985. It is the manufacturer's declaration that the product meets the requirements of the applicable EC directives.



### RCM

The RCM has formerly been used to indicate compliance with both electrical safety requirements and EMC requirements per the Australian Communications and Media Authorities EMC labelling notice.



### UL

If a product carries this Mark, Underwriters Laboratories found that samples of this product met UL's safety requirements for USA.



### CSA

The CSA mark shows that your products have been certified by an accredited third party lab and have met applicable standards as required by North American law.



### RoHS

Restriction of Hazardous Substances Directive, restricts the use of six hazardous materials ( Pb, Hg, Cd, Cr6+, PBB, PBDE ) in the manufacture of various types of electronic and electrical equipment.



### CB

The IEC CB Scheme is the IEC's system for conformity testing and certification of electrotechnical equipment and components. The system is based on mutual recognition of CBTCs (Certification Body Test Certificates) by IEC members.

BBQ MOTOR &  
PIZZA GRILL MOTOR

# DC MOTOR

## CS-6037



RATE	DC 1.5V, 120mA, 0.2W
TORQUE	12000 gf CM
RPM	0.8-1.3
MATERIAL	Plastic
CERTIFICATE	CE, RoHS

## CS-6033-3

RATE	DC 12V, 60Hz.
TORQUE	40000 gf CM
RPM	2.5-3.5
MATERIAL	Stainless steel or metal plated black coating
CERTIFICATE	CE, RoHS
REMARK	*Universal and IPX4 adapters are optional





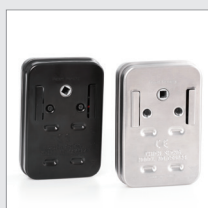
## CS-6024-1



RATE	AC/DC 3.0V, 300mA, 1.7W
TORQUE	25000 gf CM
RPM	2.0-2.8
MATERIAL	Metal plated black
CERTIFICATE	CE, RoHS, WEEE
REMARK	*Universal and IPX4 adapters are optional *CS-6024 DC version motor is available

## CS-6024-1S

RATE	AC/DC 3.0V, 300mA, 1.7W
TORQUE	25000 gf CM
RPM	2.0-2.8
MATERIAL	Stainless steel
CERTIFICATE	CE, RoHS
REMARK	*Universal and IPX4 adapters are optional *CS-6024S DC version motor is available





BBQ MOTOR  
& PIZZA GRILL MOTOR

# AC MOTOR 110V

## CS-6016



RATE	AC 120V, 60Hz, 9W
TORQUE	35000 gf CM
RPM	2.5-3.0
MATERIAL	Stainless steel
CERTIFICATE	UL , CUL, CSA
REMARK	Heavy torque



## CS-6002

RATE	AC 120V, 60Hz, 4W
TORQUE	12000 gf CM
RPM	2.0-2.4
MATERIAL	Nylon
CERTIFICATE	UL , CUL, CSA





# CS-6018

RATE	AC 120V, 60Hz
TORQUE	25000 gf CM
RPM	0.8-1.0
MATERIAL	Stainless steel
CERTIFICATE	UL, CUL, CSA



BBQ MOTOR  
& PIZZA GRILL MOTOR

# AC MOTOR 110V

## CS-6014



RATE	AC 120V, 60Hz. 25W
TORQUE	25000 gf CM
RPM	0.8-1.0
MATERIAL	Stainless steel
CERTIFICATE	UL, CUL, CSA
REMARK	Light bulb:Halogen GU10/MR16



## CS-6107

RATE	AC 120V, 60Hz, 4W
TORQUE	25000 gf CM
RPM	0.8-1.0
MATERIAL	Stainless steel
CERTIFICATE	UL , CUL, CSA
REMARK	Water resistant (IPX4)

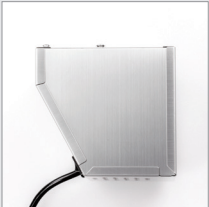






CS-6146

RATE	AC 120V, 60Hz, 400mA, 21W
TORQUE	90000 gf CM
RPM	6
MATERIAL	Stainless steel
CERTIFICATE	UL , CUL, CSA
REMARK	Super heavy torque



BBQ MOTOR &  
PIZZA GRILL MOTOR

# AC MOTOR 220V

## CS-6010

RATE	AC 220-240V, 50Hz, 4W
TORQUE	12000 gf CM
RPM	1.6-2.4
MATERIAL	Nylon
CERTIFICATE	CE,RoHS
REMARK	Water resistant (IPX4)



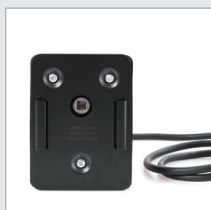
## CS-6035

RATE	AC 220-240V, 50Hz, 4W
TORQUE	12000 gf CM
RPM	1.6-2.4
MATERIAL	Nylon
CERTIFICATE	CE,CB,RCM,RoHS
REMARK	Water resistant (IPX4)



## CS-6100

RATE	AC 220V-240V, 50Hz. 4W
TORQUE	12000 gf CM
RPM	1.6-2.4
MATERIAL	Nylon
CERTIFICATE	CE, CB, RCM



## CS-6125

RATE	AC 220-240V, 50Hz, 9W
TORQUE	35000 gf CM
RPM	2.5-3.0
MATERIAL	Stainless steel
CERTIFICATE	CE,CB
REMARK	Heavy torque



## CS-6145U

RATE	AC 220V-240V, 50Hz
TORQUE	30000 gf CM
RPM	0.8-1.0
CERTIFICATE	CE, UKCA
MATERIAL	Stainless steel



## CS-6058

RATE	AC 220V-240V, 50Hz.30W
TORQUE	25000 gf CM
RPM	0.8-1.0
MATERIAL	Stainless steel
CERTIFICATE	CE, CB, RCM, RoHS
REMARK	Light bulb: Halogen GU10/MR16 Water resistant (IPX4)



## CS-6064

RATE	AC 220V-240V, 50Hz.25W
TORQUE	12000 gf CM
RPM	1.6-2.4
MATERIAL	Nylon
CERTIFICATE	CE, CB, RCM, RoHS
REMARK	Light bulb: Halogen GU10/MR16 Water resistant (IPX4)

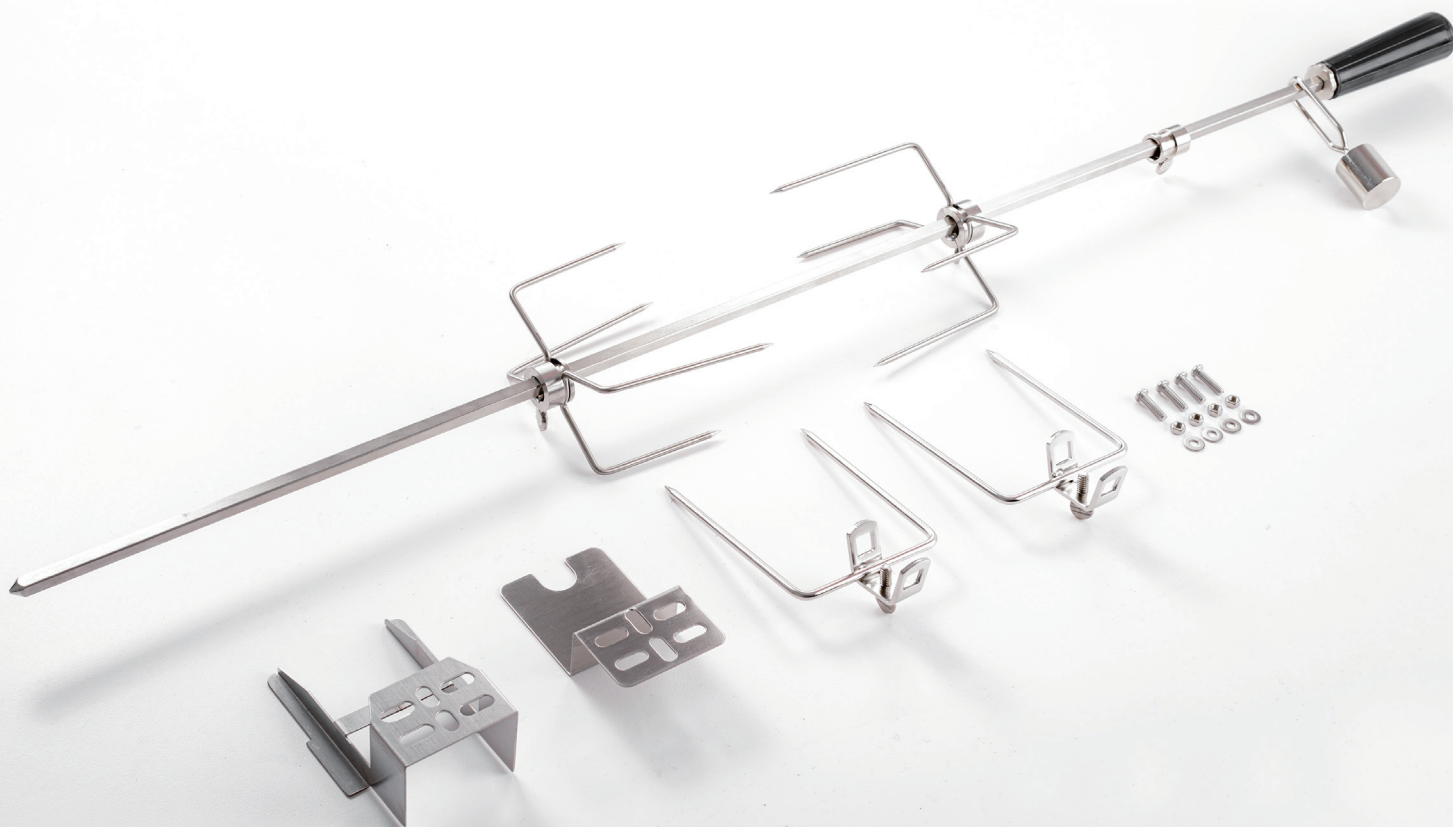


BBQ MOTOR  
PIZZA GRILL MOTOR

# ROTISSERIE KIT

## Big four-prong forks or Two-prong forks

- Material:stainless steel
- Balance
- Washer
- Collar
- Multiple adjustment methods, From one-section up to seven-sections

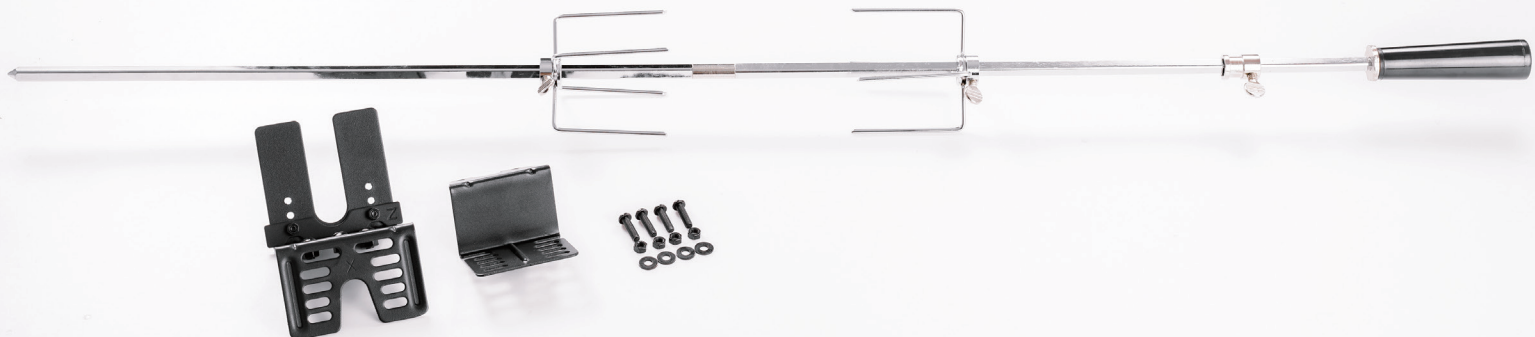






## Small four-prong forks

- Material:chrome-plated
- Collar
- Multiple adjustment methods, From one-section up to seven-sections



BBQ MOTOR  
PIZZA GRILL MOTOR

# ROTISSERIE BASKET

## Sausage Basket

---

- Chrome plated basket
- Easy to install and clean
- The height of lid is adjustable







## Vegetable Basket

- Chrome plated basket and kabob
- Easy to install and clean



BBQ MOTOR  
PIZZA GRILL MOTOR

# BBQ ACCESSORY

## CS-9029



- Extension Fork
- Material: Plated by chrome
- Before extension: 21.6"
- After extension: 30.7"

## CS-9062



- Electronic charcoal starter
- Heating fast, easy to clean



DC MOTOR	MATERIAL	TORQUE	WATER RESISTANT	CERTIFICATION
CS-6024-1	Metal plated black	25000 gf CM	-	CE, RoHS, WEEE
CS-6024-1S	Stainless steel	25000 gf CM	-	CE, RoHS
CS-6033-3	Stainless steel	40000 gf CM(max)	IPX4	CE, RoHS
CS-6037-2	Plastic	12000 gf CM	IPX4	CE, RoHS
CS-6153	Nylon	20000 gf CM	-	CE

AC MOTOR 110-120V	MATERIAL	TORQUE	WATER RESISTANT	CERTIFICATION
CS-6002	Nylon	12000 gf CM	-	UL, CUL, CSA
CS-6016	Stainless steel	35000 gf CM	-	UL, CUL, CSA
CS-6018	Stainless steel	25000 gf CM	-	UL, CUL, CSA
CS-6014W	Stainless steel	25000 gf CM	IPX4	UL, CUL, CSA
CS-6107	Stainless steel	25000 gf CM	IPX4	UL, CUL, CSA
CS-6146	Stainless steel	90000 gf CM	-	UL, CUL, CSA
CS-6001	Nylon	12000 gf CM	-	UL, CUL, CSA
CS-6011	Nylon	12000 gf CM	-	UL, CUL, CSA
CS-6031	Nylon	12000 gf CM	IPX4	UL, CUL
CS-6108	Nylon	12000 gf CM	IPX4	UL, CUL, CSA
CS-6119	Nylon	12000 gf CM	-	UL, CUL
CS-6004NEW	Stainless steel	25000 gf CM	-	UL, CUL, CSA
CS-6084	Stainless steel	90000 gf CM	-	UL, CUL, CSA
CS-6032	Stainless steel	25000 gf CM	IPX4	UL, CUL
CS-6034	Stainless steel	25000 gf CM	IPX4	UL, CUL
CS-6012	Nylon	12000 gf CM	-	CSA
CS-6039	Nylon	25000 gf CM	-	UL, CUL
CS-6065	Nylon	12000 gf CM	IPX4	UL, CUL
CS-6019	Stainless steel	25000 gf CM		CSA
CS-6066	Stainless steel	25000 gf CM	IPX4	UL, CUL
CS-6067	Stainless steel	25000 gf CM	IPX4	UL, CUL

AC MOTOR 220-240V	MATERIAL	TORQUE	WATER RESISTANT	CERTIFICATION
CS-6010	Nylon	12000 gf CM	IPX4	CE, RoHS
CS-6035	Nylon	12000 gf CM	IPX4	CE, CB, RCM, RoHS
CS-6100	Nylon	12000 gf CM	-	CE, CB, RCM
CS-6125	Stainless steel	35000 gf CM	IPX4	CE, CB
CS-6145U	Stainless steel	30000 gf CM	-	CE, UKCA
CS-6064	Nylon	12000 gf CM	IPX4	CE, CB, RCM, RoHS
CS-6058	Stainless steel	25000 gf CM	IPX4	CE, CB, RCM, RoHS
CS-6021	Nylon	12000 gf CM	IPX4	CE
CS-6098	Nylon	12000 gf CM	-	CE, CB, RCM
CS-6099	Nylon	12000 gf CM		CE, CB, RCM
CS-6036	Stainless steel	25000 gf CM	IPX4	CE, CB, RCM, RoHS
CS-6038	Stainless steel	25000 gf CM	IPX4	CE, CB, RCM, RoHS
CS-6095	Stainless steel	25000 gf CM	-	CE, CB, RCM
CS-6101	Stainless steel	25000 gf CM	-	CE, CB, RCM
CS-6068	Stainless steel	25000 gf CM	IPX4	CE, CB, RCM

## **LONG SHINE**

昶旭電子

NO.36, FIRST INDUSTRIAL AREA, XIA-CHUN DIST., GONGMING OFFICE,  
GUANGMING NEW AREA, SHENZHEN CITY, CHINA.  
[www.changxusz.com](http://www.changxusz.com)

Tel 0775-27123254  
Mail [yangjh@lonshine.com.cn](mailto:yangjh@lonshine.com.cn)

## **CHIEN SHENG**

千聖機械

6F., No. 6, Dehui St., Zhongshan Dist., Taipei City 10461 ,  
Taiwan (R.O.C.)  
[csm.ycvesa.com.tw](http://csm.ycvesa.com.tw)

Tel 02-2596-9555  
Fax 02-2595-0101